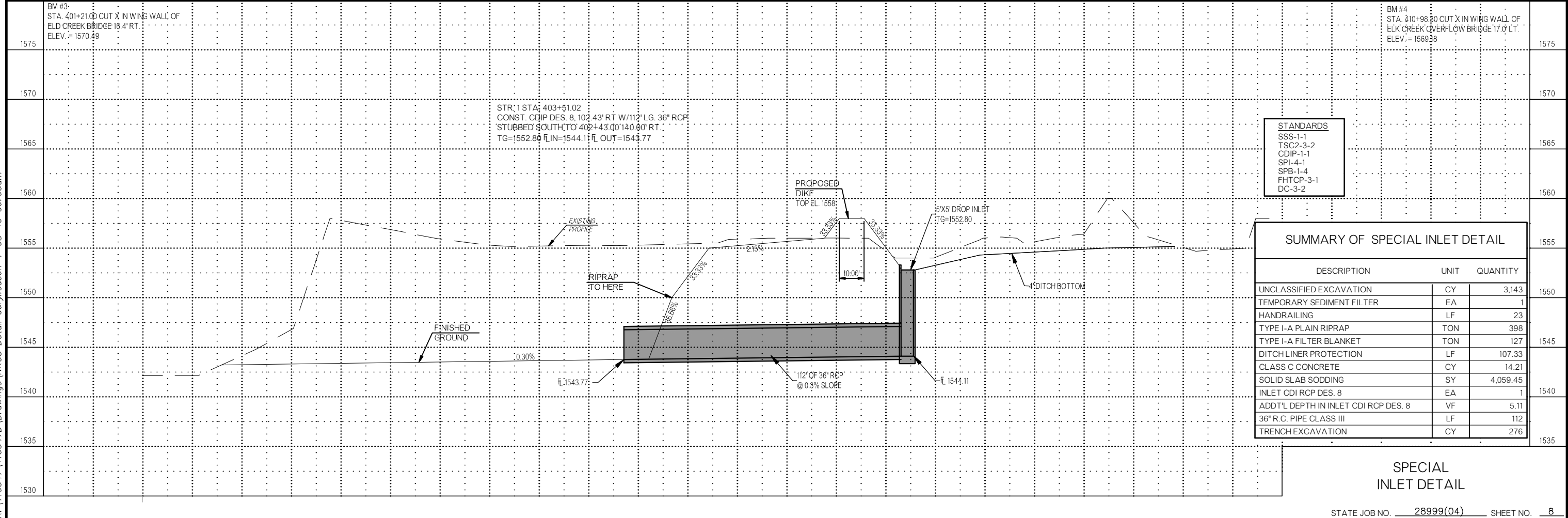
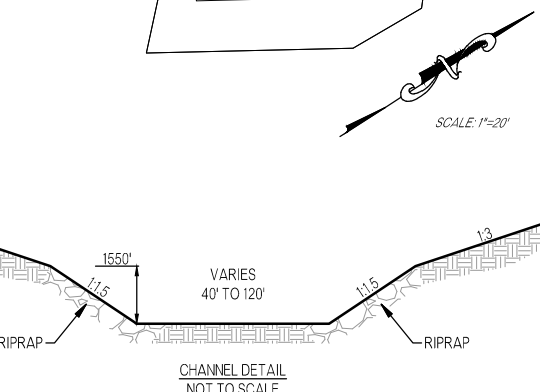


SEC. 2, T-7-N, R-19-W



- STANDARDS
- SSS-1-1
  - TSC2-3-2
  - CDIP-1-1
  - SPI-4-1
  - SPB-1-4
  - FHTCP-3-1
  - DC-3-2

SUMMARY OF SPECIAL INLET DETAIL		
DESCRIPTION	UNIT	QUANTITY
UNCLASSIFIED EXCAVATION	CY	3,143
TEMPORARY SEDIMENT FILTER	EA	1
HANDRAILING	LF	23
TYPE I-A PLAIN RIPRAP	TON	398
TYPE I-A FILTER BLANKET	TON	127
DITCH LINER PROTECTION	LF	107.33
CLASS C CONCRETE	CY	14.21
SOLID SLAB SODDING	SY	4,059.45
INLET CDI RCP DES. 8	EA	1
ADD'L DEPTH IN INLET CDI RCP DES. 8	VF	5.11
36" R.C. PIPE CLASS III	LF	112
TRENCH EXCAVATION	CY	276

SPECIAL INLET DETAIL

R:\113547\113547D Drawings\WCS Detail.dwg 4-08-16 09:33am

S.H. 44

KIOWA COUNTY